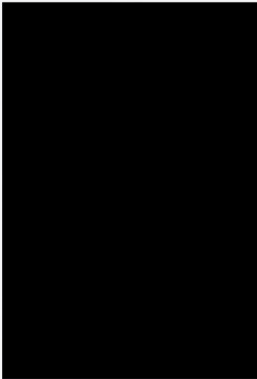
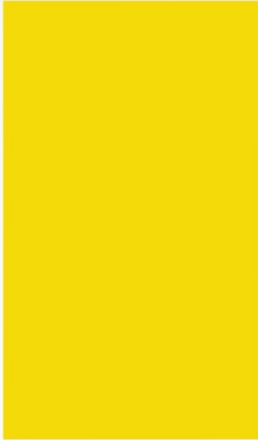


ALTECH

KING OF STRUCTURE



Regd office

ALTECH KING OF STRUCTURE



WELCOME TO OUR
PRODUCT CATALOG
2022-2023

List of Major Clients and Work

- Nestle India, Moga Punjab : Roofing and Cladding Work
- Continental Tyres, Modipuram : PEB Shed Work
- Havells, Alwar : Roof replacement work of 10,000 Sqmtr.
- Bajaj Appliances, Lucknow : Ware House
- Patanjali, Lucknow : Ware House
- Ratan Singh Buildtech : Approx 1 Lakh Sqmtr PEB Shed/ Roofing
- MBD Mall, Ludhiana, Punjab : PEB Banquet Hall
- Hilton Hotel, Ahemdabad
- Studio Symboisis, Nodia : PEB Shed
- Maida Corporation (Japanese MNC) Neemrana : Puncture Less Roofing
- Ecogreen Energy - Gurgaon : Prefabricated Buliding of 5 No. waste Transfer Station
- A2Z - Gurgaon : PEB for Ludhiana 1200 MT Waste Processing plant

List of Machineries

1. 5 Ton Overhead Crane

2. CORRUGATED SHEET PROFILE MACHINE/RIDGES/GUTTERS

3. 1200 Amp SAW Machine (Under procurement)

4. 400 Amp MIG Welding Machine

5. 250 Amp MIG Welding Machine

6. 250 Amp Arc Welding Machine

7. Gas Cutter

8. Grinder 2.5”

9. Grinder 5”

10. Grinder 7”

11. Nozzle Grinder

12. Magnetic Drilling Machine for 50 mm Hole

13. Pipe Cutter 14”

14. Hydraulic Punching Press

15. Unit for Compressor for Painting

16. Tools & Tackles(Miscl.),Pneumatic Tools/Electric tools/Mechanical

Our Manufacturing Plants



Our manufacturing plant at Ghazibad is a Heavy Engineering unit equipped with EOT Cranes, various types and sizes of metal cutting and shearing equipments, plate bending machines, drilling machines and other machines tools.

Various other facilities i.e automatic welding and gas cutting machine. Our plate bending/ rolling capacity is up to 45 mm plate thickness.

We have all adequate Quality Control & Testing Equipments.

Our Organization

We are a professionally managed Organization. The Engineering is done on latest Stad-Pro & Solid works Program. The company is manned by Board of Directors and is headed by an eminent Engineer having over 17+ years of experience on fabrication, Erection and commissioning of heavy Engineering Structure. The company has Director (Engineering & Marketing) and Director (Projects) looking after sales and marketing, Production. Project Execution of various products of the company and financial management.

The company has strength of 5 Graduate Engineers, 5 Administrative Staff and 75 Workman/Technicians. We would like to take this opportunity of inviting you to see our manufacturing facility in Ghaziabad at a date and time convenient to officials of your esteemed organization



Introduction



We would further like to introduce ourselves as one of the leading Indian Pre Engineering Building Manufacturing & Contractor Organization, and are manufacturing a wide range of quality job of M.S/S.S/H.D.P.E Piping Tanks. Steel structure, Equipment & manufacturing machinery parts of all sorts as per client specification.

Our Range of Products

- ALTECH PRE ENGINEERED BUILDING
- ALTECH PORTA CABINS
- ALTECH ROOFING/CLADDING
- ALTECH ROOF VENTS/ TURBO FANS
- ALTECH METAL DESK
- ALTECH GUARD CANINS
- ALTECH SANDWICH PANELS
- ALTECH SITE OFFICES
- ALTECH GUTTERS 7 FLASHINGS
- ALTECH READY TO MOVE VILLA
- ALTECH "C" & "Z" PURLINS
- ALTECH SITE ACCOMONDATION
- ALTECH MANGALORIAN TILES

Product Catalog



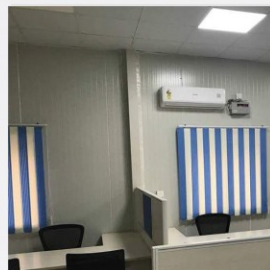
Prefabricated Shed

Keeping in mind ever-evolving requirements of our respected clients, we are providing a premium quality range of Prefabricated Factory Shed.



MS Prefabricated Factory Shed

Being a customer oriented organization, we are highly engaged in providing a wide range of MS Prefabricated Factory Shed.



PUF Panel House

We develop next-generation PUF Panels Room & Structures. Our products are made from superior grade material.



Modular Portable Buildings

we are actively engaged in offering the best quality range of Modular Portable Buildings.



Portable Building

Prominent & Leading Manufacturer from Purnia, we offer Water tank stand and JJM Water Tower.



Prefabricated Buildings

we are engaged in offering a broad assortment of Steel Structure Building.



Prefabricated Industrial Buildings

we are engaged in offering a broad assortment of Prefabricated Industrial Building.



Prefabricated Industrial Buildings

Being a leader in the industry, we are engaged in offering a qualitative range of Pre Engineered Building.



Prefabricated School Building

Being a leading firm in this industry, we are offering a high quality range of Prefabricated School Building.



Prefabricated Metal Building

We are successfully engaged in providing a wide gamut of Prefabricated Metal Building.

Contact Us

Altech King of Structure
Gate No-1, 1P. BIADA,
Maranga Industrial Growth Center
Maranga, Purnea, Bihar-854301

Reg.office
Altech King of Structure , Chopra Ram Nagar
,Jhalighat,Purnea,Bihar-854102

Call Us : +919263280057

Email Us : akostructure@gmail.com

